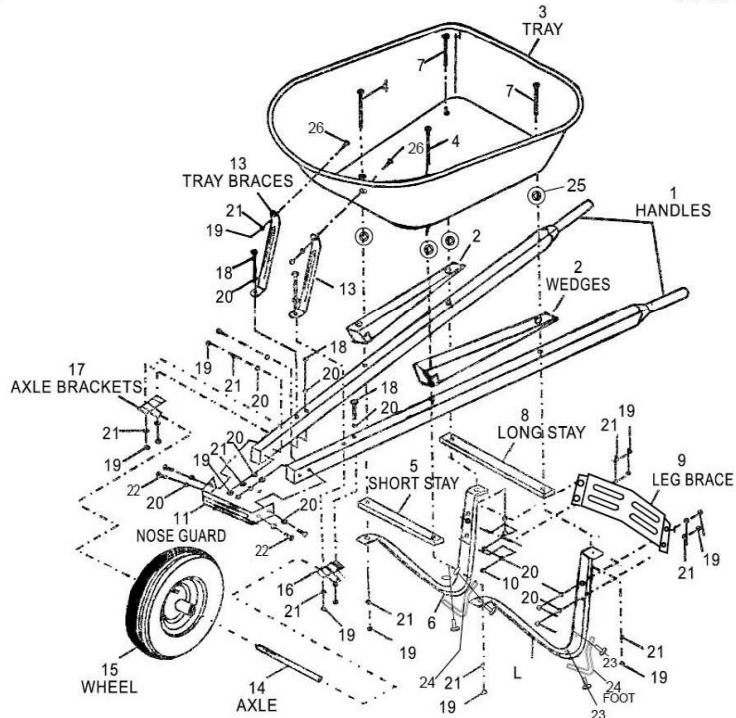


6 CU.FT.WHEELBARROW

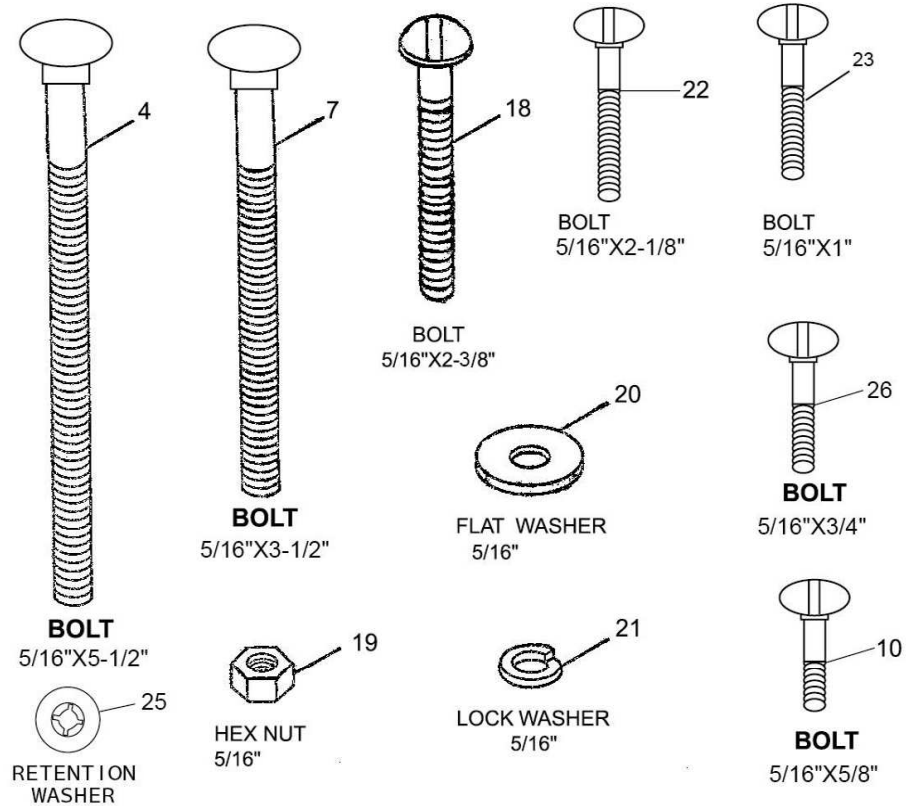
WB-6SHDS



- A. Be sure that all parts shown on the drawing are in the package.
- B. Assembly requires a few hand tools, screw driver, box or open wrench to fit the nuts.
- C. DO NOT wrench tighten nuts until entire wheel barrow has been assembled.
- D. Set the tray (3) on it's side, insert 5/16" x 5-1/2" bolts (4) through the two front holes, then slide retention washers (25) all the way onto both bolts so they stay in place.
- E. Repeat step D using 5/16" x 3-1/2" bolts (7), inserting them through the two back holes, then slide retention washers (25) all the way onto both bolts so they stay in place.
- F. Lay the tray down on it's top so that bolts are pointing up.
- G. Position wedges (2) properly and slide onto bolts.
- H. Position handles (1) properly and slide onto bolts.
- I. Position short stay (5) and long stay (8) properly and slide onto bolts.
- J. Position legs (6) properly and slide onto bolts, then secure parts using lock washers, flat washers, and nuts.
- K. Attach leg brace (9) to the back of both legs using 5/16" x 5/8" bolts (10) lock washers, flat washers, and nuts.

- L. Attach foot (24) to the bottom and back of both legs using 5/16" x 1" bolt (23), lock washers, flat washers and nuts.
- M. Bolt nose guard (11) to the outsides of the front of the handles using 5/16" x 2-1/8" bolts (22), with lock washers, flat washers, and nuts.
- N. Attach tray brace (13) to the front of the tray using 5/16" x 3/4" bolts (26), lock washers, flat washers, and nuts.
- O. Insert axle (14) through wheel (15). Slide the axle brackets (16) & (17) onto the correct ends of the axle, so they are angled in line with the handles. Bolt the axle brackets to the bottom side of the handles which are now facing up with 5/16" x 2-3/8" bolts (18), lock washers, flat washers, and nuts. Use the bolt in the front hole to also bolt the tray brace in position to the handle.
- P. Tighten all nuts securely with a wrench and screwdriver.

FULL SIZE HARDWARE CHART



BOLT BAG

| Part # | Qty | Description |
|--------|-----|---------------------------|
| 4 | 2 | Bolt, 5/16" x 5-1/2" Long |
| 7 | 2 | Bolt, 5/16" x 3-1/2" Long |
| 10 | 4 | Bolt 5/16" x 5/8" |
| 18 | 2 | Bolt 5/16" x 2-3/8" |
| 22 | 6 | Bolt, 5/16" x 2-1/8" |
| 23 | 4 | Bolt, 5/16" x 1" |
| 26 | 2 | Bolt, 5/16" x 3/4" |
| 19 | 22 | Nut, 5/16" |
| 20 | 22 | Flat washer, 5/16" |
| 21 | 22 | Lock Washer, 5/16" |
| 25 | 4 | Retention Washer |

PARTS LIST

| Qty | Description |
|-----|--------------|
| 2 | Handle |
| 2 | Wedge |
| 1 | Tray |
| 1 | Short Stay |
| 2 | Leg |
| 1 | Long Stay |
| 1 | Leg Brace |
| 1 | Nose Guard |
| 2 | Tray Brace |
| 1 | Axle |
| 1 | Wheel |
| 2 | Axle Bracket |
| 1 | Bolt Bag |
| 2 | Foot |